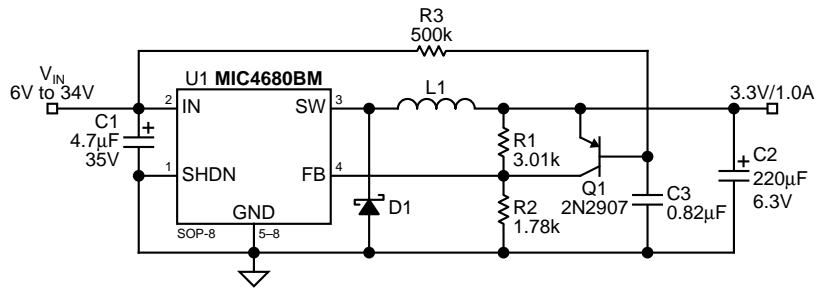
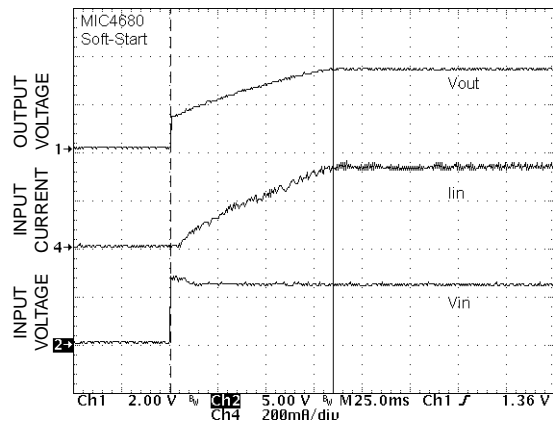


Circuit Performance

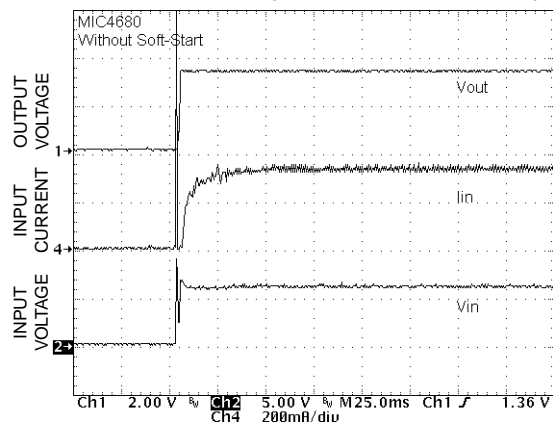
- Soft-start circuit (C3, Q1, and R3) approximate cost \$0.07
- Soft-start circuit is transparent to converter performance



With Soft Start



Without Soft Start (Standard MIC4680 Current)



MICREL INC. 1849 FORTUNE DRIVE SAN JOSE, CA 95131 USA

TEL + 1 (408) 944-0800 FAX + 1 (408) 944-0970 WEB <http://www.micrel.com>

This information is believed to be accurate and reliable, however no responsibility is assumed by Micrel for its use nor for any infringement of patents or other rights of third parties resulting from its use. No license is granted by implication or otherwise under any patent or patent right of Micrel Inc.

© 1999 Micrel Incorporated