

## MicrelSwitchPhyTools Installation Guide

August 16, 2010

### Install Applications:

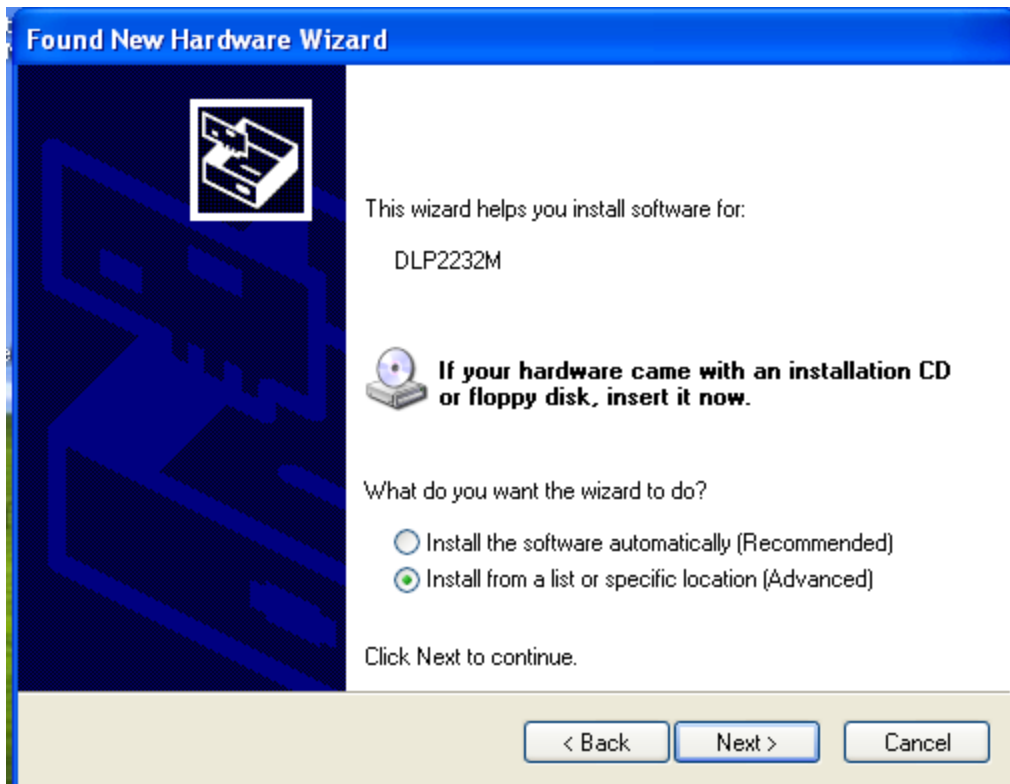
Remove the previous installation of MicrelSwitchPhyTools package if it existed. Run the MicrelSwitchPhyTools.msi file and following the default settings. All files will be copied to 'c:\Micrel\MicrelSwitchPhyTools\' directory.

### Install Driver:

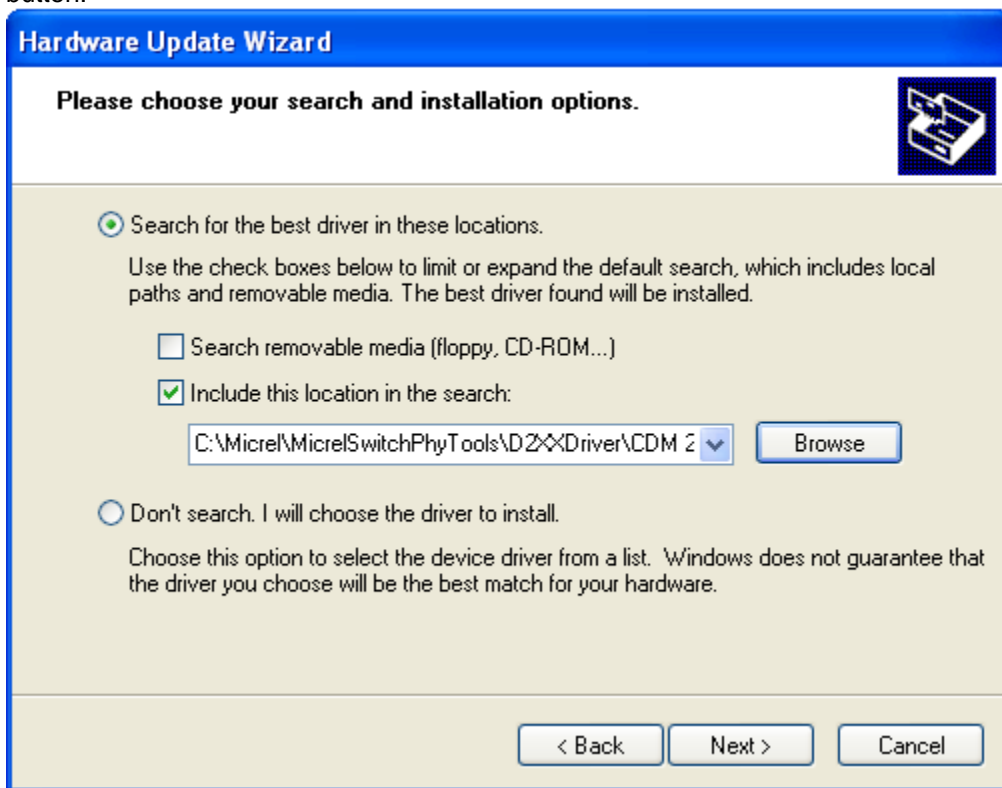
Connect Micrel evaluation board to PC USB port through a USB cable. The 'window Found New Hardware Wizard' will pop-up



. Choose 'No, not this time' radio button and click the 'Next' button.



Choose the 'Install from a list or specific location (Advanced)' radio button and click the 'Next' button.

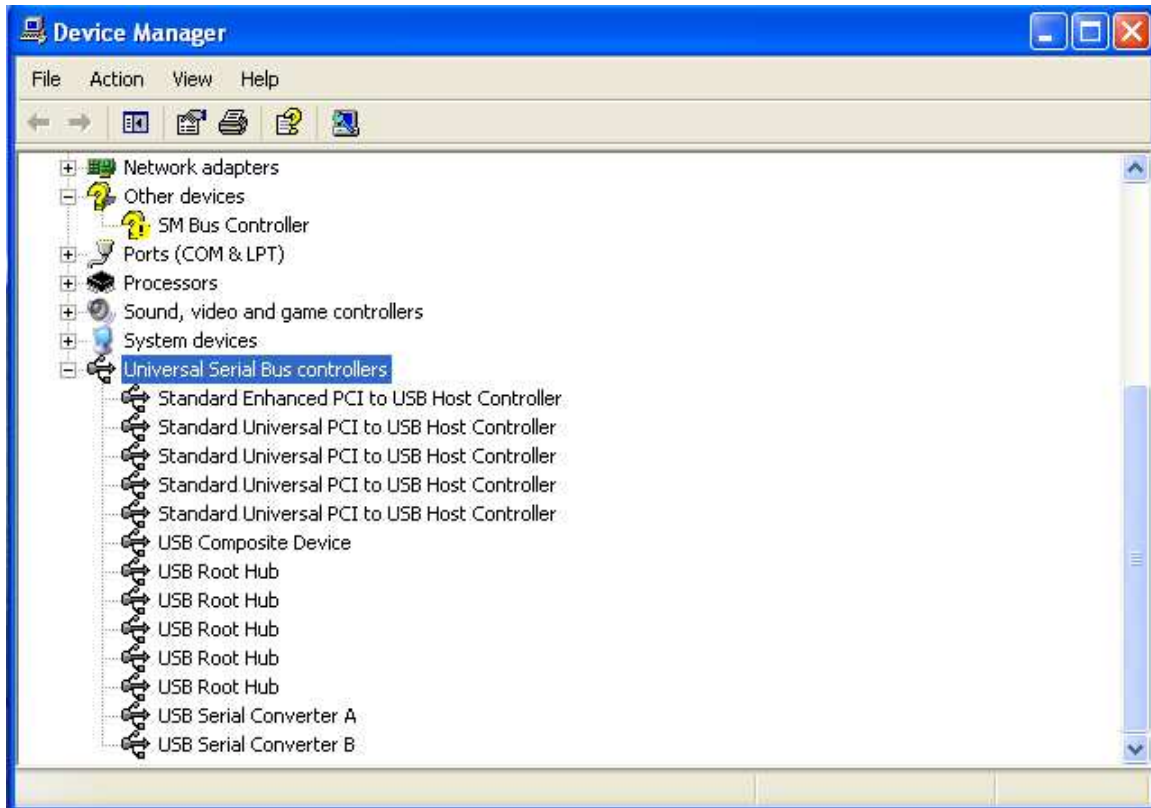


Click the 'Include this location in the search' check box, and use 'Browse' button to select the 'C:\Micrel\MicrelSwitchPhyTools\D2XXDriver\CDM 2.02.04 WHQL Certified' directory and click the 'Next' button. The window will install the drivers from this location.



Click 'Finish' button. The Window will install another driver called 'USB Serial Converter B'.

After the drivers installed, Window Device Manager will show 'USB Serial Converter A' and 'USB Serial Converter B'.



**The package include following applications:**

1. MicrelSwitchConfigApp.exe. The application does Micrel Switches configurations through SPI or I2C protocol. The application supports following Micrel products configuration: KSZ8863, KSZ8873, KSZ8864, KSZ8895, and KSZ8995.
2. MicrelMDIOConfigApp.exe. The application does Micrel PHY configuration through MDIO protocol. The application supports following Micrel products configuration: KSZ8001, KSZ8041, KSZ8721, KSZ8737, KSZ8051, KSZ8863, KSZ8873, KSZ8864, KSZ8895, KSZ8995 and KSZ9021
3. LinkMDUSB.exe. The application does Micrel's LinkMD, a time domain reflectometry (TDR)-based cable diagnostic function that diagnoses common cabling faults such as open and short circuits. The application supports following Micrel products: KSZ8895, KSZ8051 and KSZ9021