

General Description

The MIC4832 is a low audible noise 220Vp-p electroluminescent lamp (EL) driver. Using advanced Bipolar, CMOS, DMOS (BCD) technology, the MIC4832 integrates a high voltage boost converter and an H-bridge driver for driving a large EL lamp. The MIC4832 can drive large panel displays for mobile phones, remote controls, MP3 players or automotive electronics where EL panels are used for backlighting.

The MIC4832 offers design flexibility with adjustable lamp and boost converter frequencies, simply by applying external set resistors.

Micrel's new H-Bridge design reduces audible noise by creating smoother AC voltage across the EL panel. The smooth AC voltage waveform eliminates sudden changes in voltage, thus reducing the common cause of audible noise in EL drivers.

Requirements

The MIC4832 evaluation board requires an input power source that is able to deliver greater than 200mA at 1.8V.

Precautions

The evaluation board does not have reverse polarity protection. Applying a negative voltage to the V_{IN} terminal may damage the device.

The MIC4832 evaluation board is tailored for a Li-Ion range input supply voltage. It should not exceed 5.5V on the input. The MIC4832 is a high voltage, low current device and should be handled with care to prevent a possible electrical buzz.

Getting Started

1. **Connect an external supply to V_{IN} .** Apply desired input voltage to the V_{IN} (J1) and ground terminal (J2) of the evaluation board, paying careful attention to polarity and supply voltage ($1.8V \leq V_{IN} \leq 5.5V$). An ammeter may be placed between the input supply and the V_{IN} terminal to the evaluation board. Ensure that the supply voltage is monitored at the V_{IN} terminal. The ammeter and/or power lead resistance can reduce the voltage supplied to the input.

2. **Connect an EL panel.** Connect the EL panel to the VA (J4) and VB (J5) terminals. Note that polarity of the EL panel does not matter.
3. **Enable/Disable the MIC4832 Boost Regulator.** JP1 is the enable/disable jumper for the Boost Regulator portion of the MIC4832. Connecting JP1 to ground disables the boost regulator and connecting JP1 to V_{IN} enables the boost regulator. A voltage signal may be applied to the center pin of JP1 to enable or disable the boost regulator. A low voltage signal (0V) will disable the boost regulator and a high voltage equal to V_{IN} will enable the boost regulator. The enable voltage should rise and fall between high and low monotonically without interruptions.
4. **Enable/Disable the MIC4832 H-Bridge.** JP2 is the enable/disable jumper for the H-Bridge portion of the MIC4832. Connecting JP2 to ground disables the H-Bridge and connecting JP2 to V_{IN} enables the H-Bridge. Disabling the H-Bridge does not disable the boost regulator.
5. **Enable/Disable the EL panel.** Both the Boost Regulator and the H-Bridge of the MIC4832 must be enabled in order for the EL panel to light up. For minimum shutdown current, both the Boost Regulator and the H-Bridge should be turned off. The EN jumper (JP3) connects the V_{IN} to the inductor. This jumper may be used to enable or disable the EL panel on the evaluation board, without having to use JP1 and JP2 for evaluation purposes.

Ordering Information

Part Number	Description
MIC4832YMM EV	220Vpp MSOP Evaluation Board
MIC4832YML EV	220Vpp MLF Evaluation Board

MLF and *MicroLeadFrame* are a registered trademark of Amkor Technology.

Micrel, Inc. • 2180 Fortune Drive • San Jose, CA 95131 • USA • tel + 1 (408) 944-0800 • fax 1 (408) 474-1000 • <http://www.micrel.com>

December 2007

M9999-122007
(408) 955-1690

Boost Regulator Output Voltage

The boost regulator output voltage is set to 110V. The output peak-to-peak voltage across the EL panel is about 2 times the boost regulator output voltage (220Vp-p).

EL Panel Size and Equivalent Circuit

Using laboratory data, it can be shown that the EL panel has an equivalent circuit equal to a series resistance (Rs) with a series capacitance (C) and a parallel resistance (Rp). For example, if an EL panel is 4in², then the equivalent circuit is about 20nF of capacitance in series with 450Ω of resistance and 766kΩ of parallel resistance. Figure 1 and Table 1 shows close approximations of the equivalent circuit for different EL panel sizes.

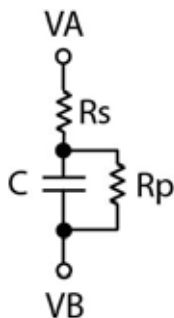


Figure 1. EL Panel Equivalent Circuit

Table 1. EL Panel Equivalent Circuit Components

Size (in ²)	0.40	1.0	2.0	3.0	4.0	6.0
C (nF)	2	5	10	15	20	30
Rs (Ω)	4600	1800	900	600	450	300
Rp (MΩ)	7.66	3.05	1.53	1.02	0.766	0.511

Changing the Boost Regulator Frequency (f_{sw})

The boost regulator switching frequency may be changed depending on the value of the R_{sw} resistor. The R_{sw} resistor on the evaluation board is equal to 332kΩ. The switching frequency may be calculated using the R_{sw} resistor by the following equation.

$$f_{sw} \text{ (kHz)} = \frac{36}{R_{sw} \text{ (M}\Omega)}$$

Lowering the switching frequency will deliver more power will be delivered to the EL panel by the boost regulator; however, the switching frequency of the boost regulator should not be low enough to create over-shoot at the SW pin or at the CS pin. Refer to Table 2 for recommended values.

Changing the EL Lamp Frequency, f_{EL}

The EL lamp frequency (H-Bridge frequency) may be changed depending on the value of the R_{EL} resistor. The R_{EL} resistor on the evaluation board is equal to 1.78MΩ. The EL lamp frequency may be calculated using the R_{EL} resistor by the following equation.

$$f_{EL} \text{ (Hz)} = \frac{360}{R_{EL} \text{ (M}\Omega)}$$

The higher the EL lamp frequency, the brighter the EL panel; however, more brightness will require more input current, thus demand more input power. More power may be delivered to the EL lamp by increasing the input voltage or by lowering the switching frequency of the boost regulator. A table of recommended components for different EL panel sizes and EL lamp frequency is shown in Figure 2 and Table 2.

Typical Application Circuit

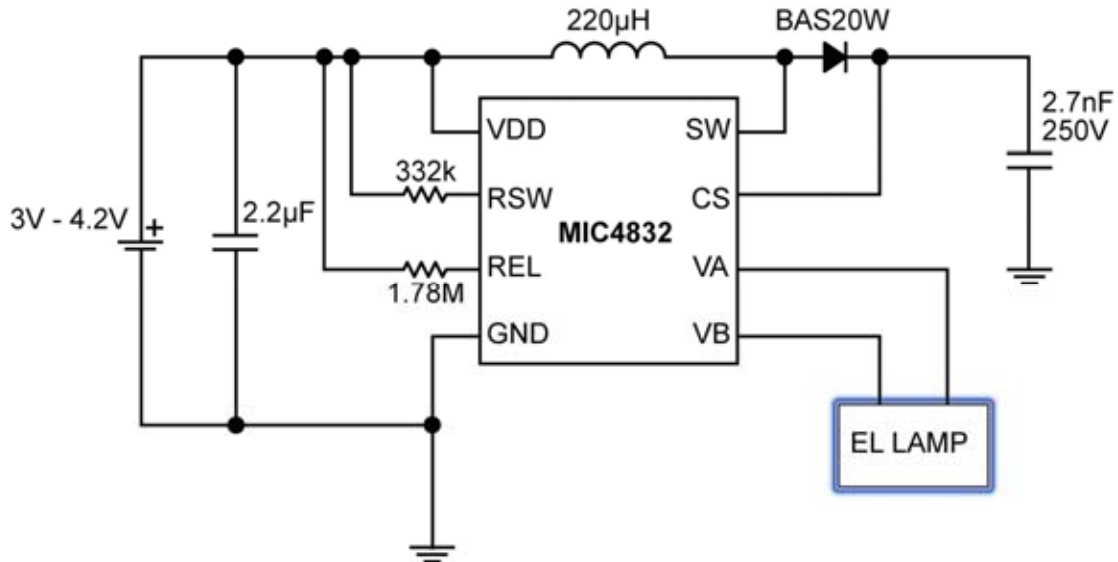


Figure 2. Typical Li-Ion Powered MIC4832 Circuit

Table 2. Recommended R_{SW} & R_{EL} values for various panel sizes

Size (inch ²)	Capacitance (nF)	Lamp Frequency (Hz)	100	200	300	400	500	600	700	800	900
		Rel (MΩ)	2.82	1.69	1.1	0.837	0.665	0.562	0.471	0.409	0.369
0.4	2	Rsw (kΩ)	240	252	273	281	257	269	281		
		fsw (kHz)	150	143	132	128	116	105	98		
1	5	Rsw (kΩ)	257	295	353						
		fsw (kHz)	140	122	102						
2	10	Rsw (kΩ)	300	333							
		fsw (kHz)	120	108							
3	15	Rsw (kΩ)	313								
		fsw (kHz)	115								

Note: Table 2 applies to circuit shown in Figure 2.

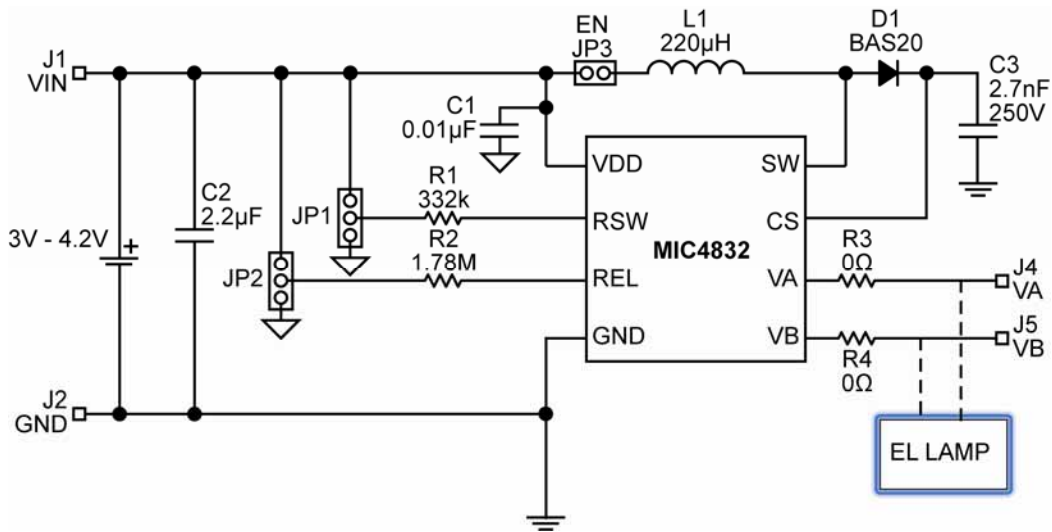


Figure 3. Evaluation Board Schematic

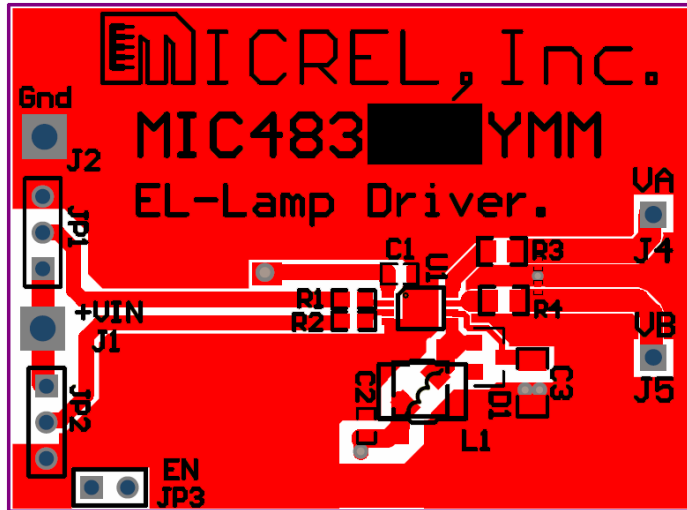
Bill of Materials

Item	Part Number	Manufacturer	Description	Qty
C1	C1608X7R1A103K	TDK	0.01µF Ceramic Capacitor, 10V, X7R, Size 0603	1
C2	C1608X5R0J225K	TDK	2.2µF Ceramic Capacitor, 6.3V, X5R, Size 0603	1
C3	C2012C0G2E2272J	TDK	0.0027µF Ceramic Capacitor, 250V, C0G, Size 0805	1
L1	LPF2810BT-221M(B)	ABCO	220µH, 110mA I _{SAT} .	1
D1	BAS20-V-GS18	Vishay	200V/200mA Hi-Voltage Switching Diode	1
R1	CRCW06033323FKEYE3	Vishay	332kΩ, 1%, 1/16W, Size 0603	1
R2	CRCW06031784FKEYE3	Vishay	1.78MΩ, 1%, 1/16W, Size 0603	1
R3, R4	CRCW06030R00FKEYE3	Vishay	0Ω, 1%, 1/16W, Size 0603	2
U1	MIC4832	Micrel	Low Noise 220Vp-p EL Driver	1

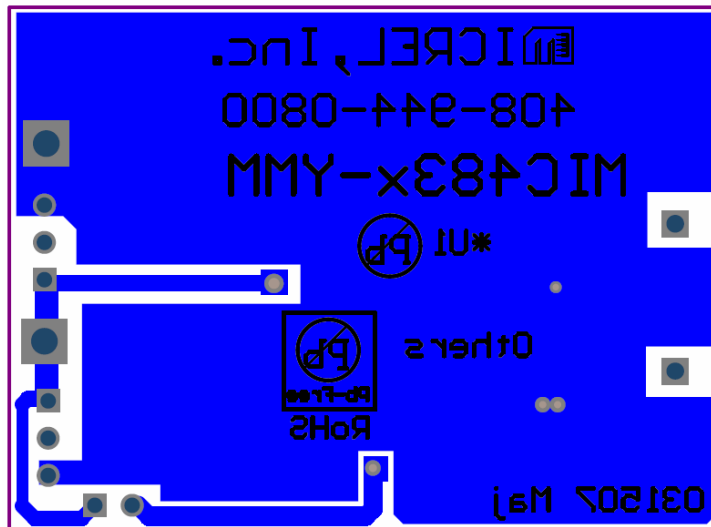
Notes:

1. TDK: www.tdk.com
2. ABCO: www.abco.com
3. Vishay: www.vishay.com
4. Micrel, Inc.: www.micrel.com

Printed Circuit Board Layout (MSOP)

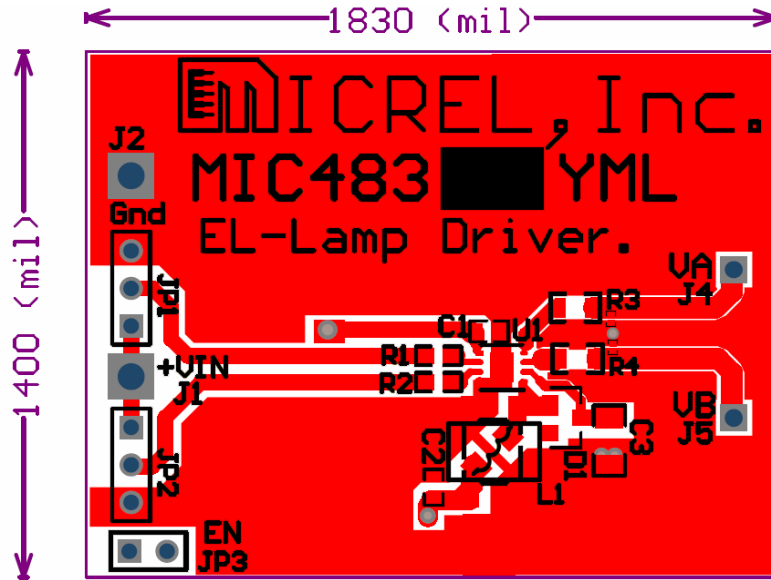


MSOP Top

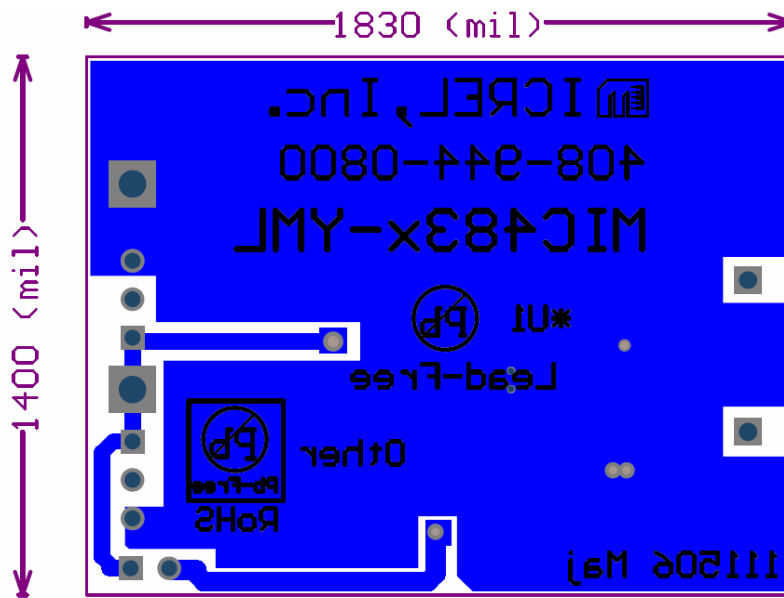


MSOP Bottom

Printed Circuit Board Layout (MLF®)



MLF® Top



MLF® Bottom

MICREL, INC. 2180 FORTUNE DRIVE SAN JOSE, CA 95131 USA
TEL +1 (408) 944-0800 FAX +1 (408) 474-1000 WEB <http://www.micrel.com>

The information furnished by Micrel in this data sheet is believed to be accurate and reliable. However, no responsibility is assumed by Micrel for its use. Micrel reserves the right to change circuitry and specifications at any time without notification to the customer.

Micrel Products are not designed or authorized for use as components in life support appliances, devices or systems where malfunction of a product can reasonably be expected to result in personal injury. Life support devices or systems are devices or systems that (a) are intended for surgical implant into the body or (b) support or sustain life, and whose failure to perform can be reasonably expected to result in a significant injury to the user. A Purchaser's use or sale of Micrel Products for use in life support appliances, devices or systems is a Purchaser's own risk and Purchaser agrees to fully indemnify Micrel for any damages resulting from such use or sale.

© 2007 Micrel, Incorporated.